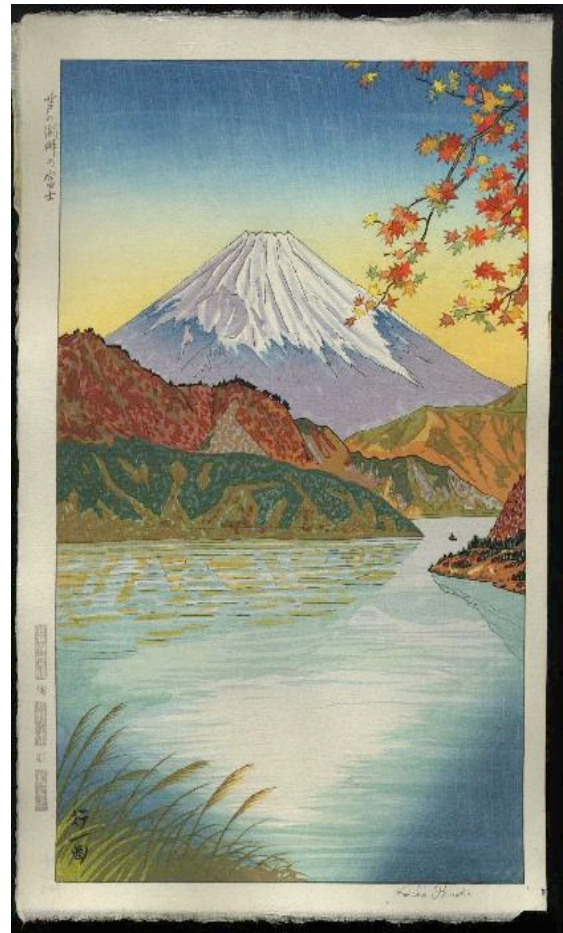


“Sun from Japan”

From the land of the rising Sun, a series of talks on the Algebraic Geometry studied at Waseda University:



Okuma auditorium at Waseda University



“Shin hanga” woodblock print by Koichi Okada

14:00 – Hajime Kaji: *Existence of a nonreflexive embedding with birational Gauss map for a projective variety*

14:30 – Satoru Fukasawa: *Galois points for a plane curve in positive characteristic*

15:00 – Katsuhisa Furukawa: *Rational curves on hypersurfaces*

15:30 – Break

16:00 – Yasuharu Amitani: *Polarized manifolds with an ample divisor which is Castelnuovo.*

16:30 – Kiwamu Watanabe: *Classification of polarized manifolds admitting homogeneous varieties as ample divisors*

All talks held at IMPA on Friday, August 10, in Room 347.